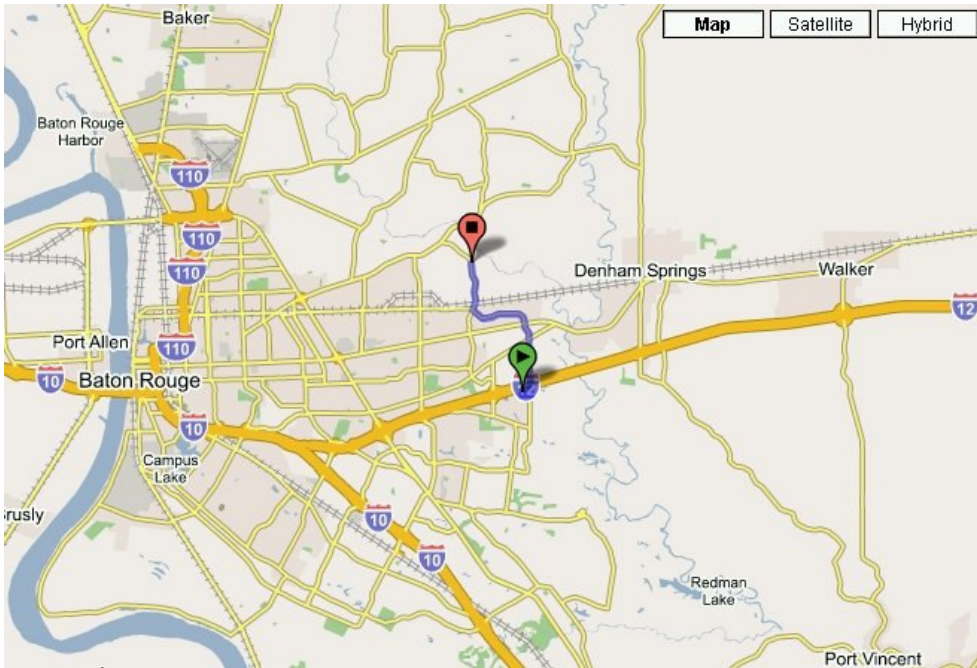


Directions to Waddill Outdoors Education Center



1. FROM EAST I-12: Get off at O'Neal Lane exit. This will be the first exit after crossing the Amite River, and the first exit after the Denham Springs exit. Turn right on O'Neal.
2. FROM WEST ON I-10: Take I-12 at the split and head east. O'Neal Lane exit is just past the Millerville exit. When you get to the Millerville exit, you want to be in the rightmost lane. Turn left on O'Neal.
3. Continue on O'Neal Lane past Old Hammond, past Florida Boulevard (aka 190). The road then turns west and becomes Choctaw extension. The next light after it heads west will be Flannery Road. Here turn right (north), go past the railroad tracks. About 2 miles up is Waddill Refuge on the right.

